

TILE INSTALLED ON COUNTERTOPS

322C-2009/2010

SUITABLE SUBSTRATES

- 19 mm exterior grade plywood

MATERIALS

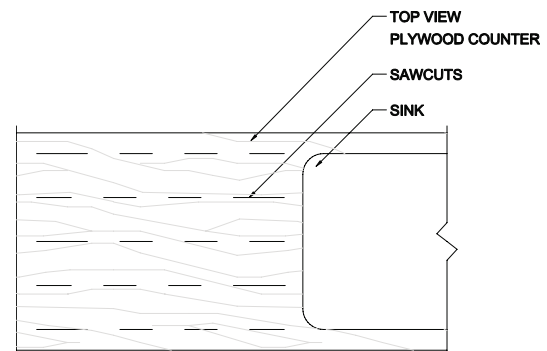
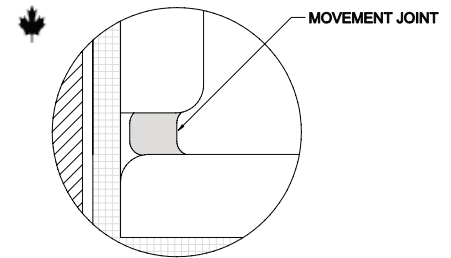
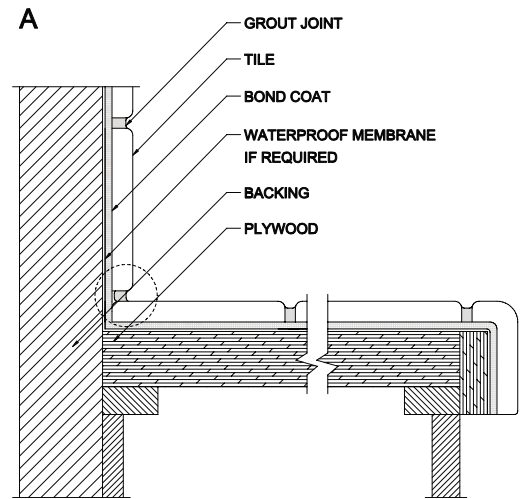
- Extra heavy duty glazed tile, unglazed porcelain tile, natural stone tile.
- Cleavage Membrane - minimum 6 mils polyethylene film (detail C).
- METAL LATH: 1.4 kg/m² (Detail C) (ASTM C847-96)
- Scratch coat **Flextile 57 Scratch Coat**
25+ mm mortar bed **Flextile Dry Pack Mortar & Flextile 57 Slurry Bond Coat**
- WATERPROOF MEMBRANE, if required (ANSI A118.10)
Flextile WP900 or WP980 Waterproof & Crack Isolation Membrane (ANSI A118.10/A118.12)
- Cementitious backer unit (CBU) minimum 13 mm thick (ANSI A118.9-1999) or coated glass mat backer board (detail B) minimum 13 mm. (ASTM C1178-96)
- BOND COAT
Flextile 50, 52, 56SR, 58 or 66 Polymer Modified Mortar (ANSI A118.4/A118.11)
Flextile 51 / 44 – two component Latex Mortar System (ANSI A118.4/A118.11)
Flextile 58XT Fast Set two-component Latex Mortar System (ANSI A118.4/A118.11)
Flextile Flex-Epoxy 100 – 100% Solids Epoxy Mortar (ANSI A118.3)
- GROUT
Flextile Polymer Modified Grout (ANSI A118.7)
Flextile Flex-Epoxy 100 – 100% Solids Epoxy Grout (ANSI A118.3)
ColourMax Plus Urethane Grout

APPLICATION

- Detail A - Gap plywood 6 mm and support joint with cross bridging. Fill gap between plywood with setting materials. Random cuts spaced approximately at 152 mm and 152 mm in length should be cut into the plywood to relieve the strains and to permit the plywood to remain relatively equal in moisture content on both sides.
- Detail B - Attach cementitious backer unit (CBU) or nominal 11 mm thick fibre-cement backer meeting ASTM C1288-1999. For coated glass mat backer board do not use membrane and install with 30 mm galvanized or non-pull out nails. Gap cementitious backer unit (CBU) 3 mm. Tape joint with fibreglass tape set in latex-Portland cement mortar. Set tiles to achieve minimum 95% contact with bonding materials and let cure before grouting. Provide 100% contact with bonding material under bullnose tile at the apron.
- Detail C - Apply polyethylene film over lapped at least 102 mm. Nail galvanized diamond metal lath butted, not overlapped, to the plywood. Apply mortar bed to required thickness of 32 mm min. Allow mortar bed to cure. Apply bond coat to cured mortar bed. Apply tile to bond coat before bond coat skins over. Use sufficient bond coat to ensure minimum 80% contact. Contact shall be evenly distributed to give full support of the tile. On fresh mortar bed, beat tile into position. On dry-set mortar, slide tile into position. Beat mosaic tile into position. Allow bond coat to cure. Force grout into full depth of joint, remove excess grout and clean.

LIMITATIONS

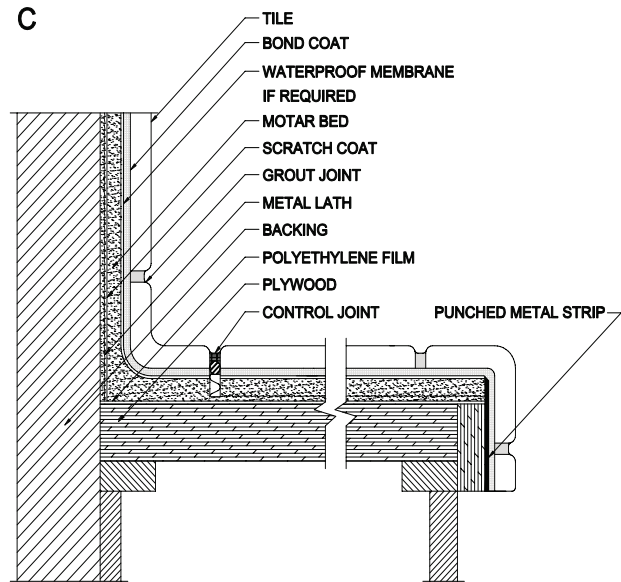
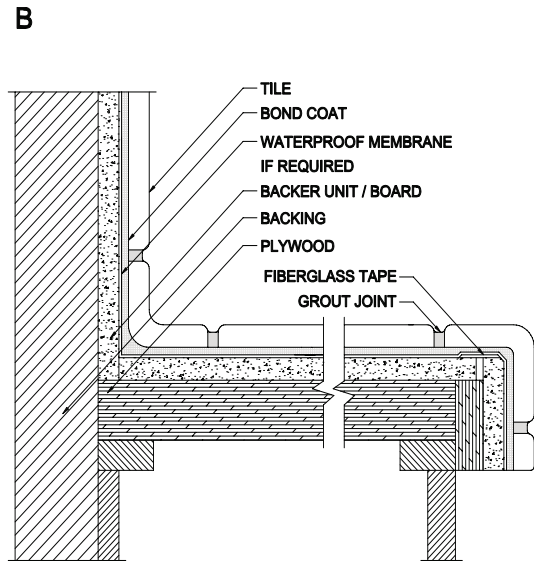
- Latex-Portland cement grouts are absorbent and can stain. A water based grout sealer may be recommended. Follow manufacturers recommendations.



The above installation detail is used with the permission of the Terrazzo Tile & Marble Association of Canada. The installation products shown are Flextile's product recommendations for this specific detail, and are not intended to replace TTMAC's original generic specification.

OTHER CONSIDERATIONS

- Details A and B are most commonly used, particularly in residential construction. Epoxy grout is recommended for optimum stain resistance and hygienic purposes. An alternate method for finishing counter top edges is the use of prefabricated trim at the apron. Where ceramic tile is used to cover apron, full support must be provided behind tile using one of the methods shown. Where cut outs in counter tops are provided for appliances, provide cross bridging under counter tops within 51 mm of opening.
- A movement joint may be provided between the backsplash and the counter. A caulking sealant or a prefabricated movement joint may be used.
- Waterproof membrane if required must be specified. (ANSI A118.10-1999) Follow manufacturer’s recommendations.
- Refer to Notes For The Professional.



The above installation detail is used with the permission of the Terrazzo Tile & Marble Association of Canada. The installation products shown are Flextile’s product recommendations for this specific detail, and are not intended to replace TTMAC’s original generic specification.