

# TILE INSTALLED IN STEAM ROOMS

## DETAIL A - CONCRETE OR MASONRY CONSTRUCTION

321SR-2009/2010

### SUITABLE SUBSTRATES

- Frame construction, masonry or concrete backing.

### MATERIALS

- TILE
- MORTAR BED  
**Flextile Dry Pack Mortar (mixed with 43 Mortar Additive) & Flextile 57 Slurry Bond Coat**
- BOND COAT  
**Flextile 51 / 44 – two component Latex Mortar System (ANSI A118.4/A118.11)**  
**Flextile 58XT Fast Set two-component Latex Mortar System (ANSI A118.4/A118.11)**
- GROUT  
**Flextile Polymer Modified Grout (ANSI A118.7)**
- WATERPROOF / CRACK ISOLATION MEMBRANE (as required)  
**Flextile WP900 or WP980 Waterproof & Crack Isolation Membrane (ANSI A118.10/A118.12)**

### APPLICATION

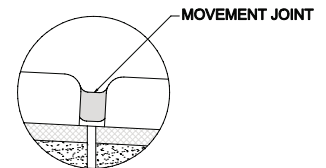
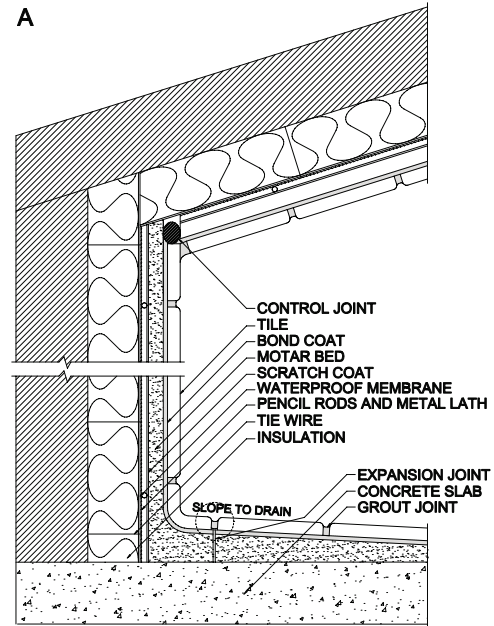
- Tie wire spaced at 305 mm vertically and 406 mm to 610 mm horizontally. Attach to 6 mm steel pencil rods vertically over insulation; attach metal lath to pencil rods. Install scratch coat (see Tile Guide Specification Section Mixes 2.5.1), mortar bed (see Tile Guide Specification Section Mixes 2.5.3 and 2.5.5) and bond coat as per detail 307W-2009/2010 or 308W-2009/2010 (walls), Detail 310F-2009/2010 A (floors) and 315C-2009/2010 (ceilings).

### LIMITATIONS

- Waterproof membrane must be suitable for operating temperatures.

### OTHER CONSIDERATIONS

- Detail 311F-2009/2010 may be used for floor installation provided that proper slope to drain is in the substrate.
- Drains should be designed to permit drainage of water at the tile surface and the surface of the waterproof membrane. A drainage layer may be incorporated over the waterproof membrane as recommended by the manufacturer. For drainage see Detail 326DR-2009/2010.
- Refer to Notes For The Professional and 301MJ-2009/2010.
- For high use showers and wet areas (hotels, gang showers, sports facilities etc.) a waterproof membrane shall be used.
- All openings and cuts must be treated to ensure waterproof integrity.
- Refer to Detail 319B-2009/2010 for drainage detail.
- If waterproof membrane is not specified a slurry bond coat must be applied to concrete slab.
- Slope ceilings 152 mm per 1000 mm and floors 20 mm per 1000 mm.
- Waterproof membrane should have a Perm Rating of less than 1 using ASTM E96 Standard Test Method for Water Vapour Transmission.



The above installation detail is used with the permission of the Terrazzo Tile & Marble Association of Canada. The installation products shown are Flextile's product recommendations for this specific detail, and are not intended to replace TTMAC's original generic specification.

## DETAIL B - FRAME CONSTRUCTION 321SR-2009/2010

### SUITABLE SUBSTRATES

- Wood or metal studs maximum 406 mm o.c.

### MATERIALS

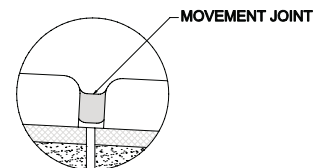
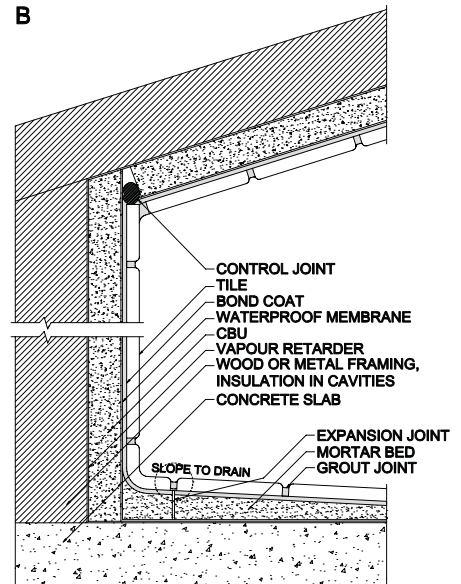
- 13 mm minimum thickness cementitious backer unit (CBU) as per Detail 305W-2006. Detail A
- MORTAR BED  
**Flextile Dry Pack Mortar/Flextile 43 Mortar Additive with Flextile 57 Slurry Bond Coat**
- WATERPROOF MEMBRANE  
**Flextile WP980 Waterproof & Crack Isolation Membrane (ANSI A118.10/A118.12)**
- BOND COAT  
**Flextile 51 / 44 – two component Latex Mortar System (ANSI A118.4/A118.11)**  
**Flextile 58XT Fast Set two-component Latex Mortar System (ANSI A118.4/A118.11)**
- GROUT  
**Flextile Polymer Modified Grout (ANSI A118.7)**
- Vapour Retarder as per manufacturers recommendations.

### APPLICATION

- If tile being installed directly: use Detail 305W-2009/2010 Detail A on walls; if tile is being set over a waterproof membrane follow manufacturer's recommendations.

### OTHER CONSIDERATIONS

- Detail 311F-2009/2010 may be used provided that proper slope to drain is in the substrate.
- Drains should be designed to permit drainage of water at the tile surface and the surface of the waterproof membrane. A drainage layer may be incorporated over the waterproof membrane as recommended by the manufacturer. For drainage see Detail 326DR-2009/2010.
- Refer to Notes For The Professional and 301MJ-2009/2010.
- For high use showers and wet areas (hotels, gang showers, sports facilities etc.) a waterproof membrane shall be used.
- All openings and cuts must be treated to ensure waterproof integrity.
- Refer to Detail 319SR-2009/2010 Detail B for drain.
- Waterproof membrane if required must be specified. (ANSI A118.10-1993)
- If waterproof membrane is not specified a slurry bond coat must be applied to concrete slab.
- If required, an insulation layer should be used made of rigid polystyrene. Consult with manufacturer.
- Slope ceilings 152 mm per 1000 mm and floors 20 mm per 1000 mm.
- Waterproof membrane should have a Perm Rating of less than 1 using ASTM E96 Standard Test Method for Water Vapour Transmission.



The above installation detail is used with the permission of the Terrazzo Tile & Marble Association of Canada. The installation products shown are Flextile's product recommendations for this specific detail, and are not intended to replace TTMAC's original generic specification.